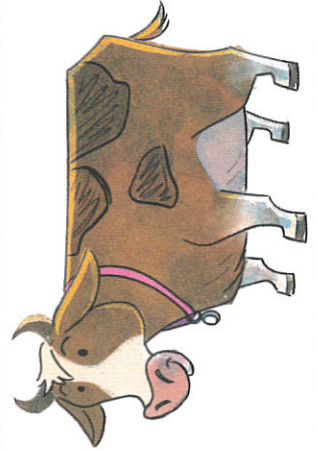
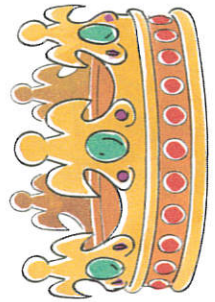
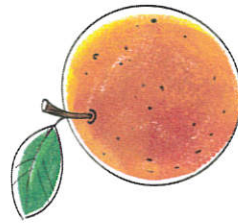
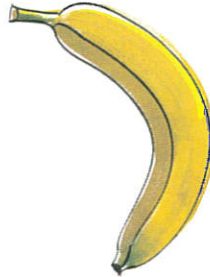
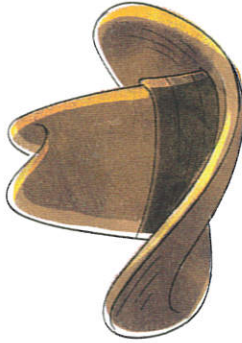
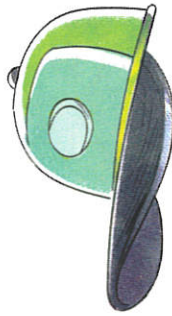
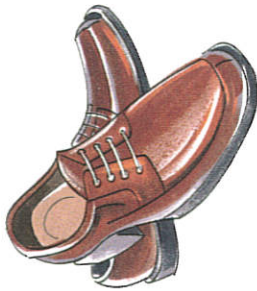
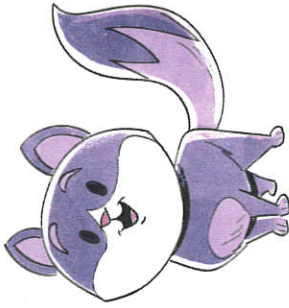
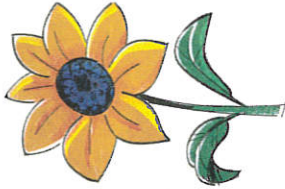
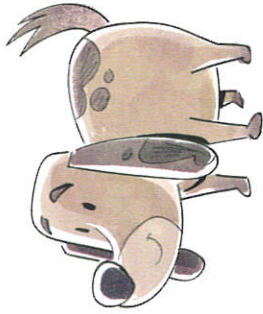


Not Like Others

INSTRUCTIONS: In each triplet, circle the item that doesn't belong.



BIBLE STORY SUMMARY:

- Mary and Joseph traveled to Bethlehem to be counted.
- There was no guest room available, so they stayed where animals are kept.
- Jesus was born to be God's promised Savior.

KEY PASSAGE: John 1:1-2

BIG PICTURE QUESTION:

- Is Jesus God or a human? As the Son of God, Jesus is both fully God and fully human.

FAMILY DISCUSSION STARTERS:

- Why do you think God sent Jesus to ordinary people, instead of someone wealthy or powerful?
- How do you feel when you think about Jesus coming to earth as a human baby?
- Why is Jesus' birth so important?

FAMILY ACTIVITY:

- Plan a day to celebrate Christmas, regardless of the time of year. Pick one or two of your family's favorite traditions and do them together. Talk about the true meaning of Christmas and why we can celebrate it all year.



DOWNLOAD the
LIFEWAY KIDS APP



STORY POINT: **JESUS WAS BORN TO BE GOD'S PROMISED SAVIOR.**